

Easy, Accurate, Trusted.



TruCheck Optima: Largest Field of View Hand Held 2D Verifier



Now you can verify all your 1D and 2D symbols with a hand-held verifier without worrying about field of view limitations.

The TruCheck Optima™ from Webscan provides a fully integrated and hand-held imaging head that connects to a PC through the USB port. To verify 1D or 2D symbols, simply position the imager over a barcode and press the button. Clear and concise results are displayed instantly. The graphic interface shows operators clearly where potential problems exist. The TruMatrix imager features integrated illumination and a rugged housing. There is nothing to focus and nothing to align. You are guaranteed the most accurate and repeatable verification results.

Every application. Every time.

Webscan was founded in 1995 with one singular goal: *to design and build the world's most accurate barcode verification systems.* Through optical, mechanical, and electronic technologies that power its offline and online systems, Webscan has earned an international reputation for delivering ease-of-use and unsurpassed accuracy, across every barcode application, every time. Today, leading packaging producers, defense, pharmaceutical companies, and retailers worldwide trust Webscan to be sure every barcode that goes to market complies with industry standards.

Calibration and traceability

All Webscan systems are calibrated and fully traceable to NIST standards. Calibration is performed by the user in a matter of seconds. You always know that your system is measuring accurately with Webscan technology.

Meets requirements of every industry

GS1 Quality and Data Validation

Verify that your 1D and 2D symbols comply with all GS1 requirements. Print Quality is verified according to ISO 15415 and ISO 15416. Data format failures, which are all-to-common in GS1 barcodes, are clearly spelled out to make corrective action easy.

QR Codes for Marketing and Cell Phone Reading

QR Codes are emerging everywhere. Verify that your QR Codes are constructed and printed correctly in accordance with ISO 18004 and ISO 15415. Webscan verification systems will ensure that your marketing efforts are effective because your QR Codes are in compliance with industry standards for readability.

Healthcare and Pharmaceutical Regulations

These applications are very sensitive to accuracy and dependability. Verify symbol quality and data format according to GS1 specifications and ISO 15415 to ensure compliant and readable symbols every time!



SPECIFICATIONS

Symbologies:

Data Matrix, QR Code, Aztec Code, MaxiCode, GS1-DataBar (formerly RSS), GS1-Composite Symbology, UPC/EAN, Code 128, ITF-14, I25, Code 39, TLC-39, Codabar, PDF 417, Micro PDF 417 (limited to Field of View size), Pharmacode, MSI/Plessey

Field of View Options and X-Dimension Capability

Version	Field of View	Min X Dim
Optima Standard	2" x 1 1/2" (51 x 38 mm)	8.0 mil
Optima +Plus	2 3/4" x 2 1/16" (70 x 52 mm)	8.0 mil

Options:

- GS1 Calibrated Conformance Test Card
- Extended Service Plans

Light Source:

- Narrow band 660nm LED

Features:

- CCD Imager with Integrated Illumination
- USB interface to PC
- ISO grading, AS 9192, AIM DPM
- Data export to printer, PDF file or Excel
- Software easily upgradeable
- Calibrated to NIST traceable standards
- Parses and validates industry standard data formats
- Variable aperture size

Decoding/Grading Analysis Specifications:

Full ISO 15415 Grading A, B, C, D, F: Unused Error Correction, Modulation, Axial non-uniformity, Grid non-uniformity, Symbol Contrast, Reference Decode, Finder Pattern Damage, Bar Width Growth (X and Y), Quiet Zone, AIM DPM Grading: Cell Contrast, Cell Mod.

Physical Characteristics:

- Dimensions (HxWxD) 8.0" x 6.0" x 7.5"
- Weight: 3 lbs.

Environment:

- Temperature: 0-40°C
- Humidity: 5% - 95% noncondensing

Conformance:

- ISO 15415, 15426-2
- MIL-STD 130 (L through N)
- ISO 16022, 18004, 16023, 24778
- AIQG AS9132,
- AIM DPM (only 45Q)

For more information, please contact:

Ready for the future

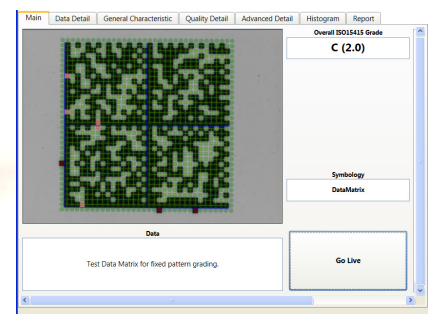
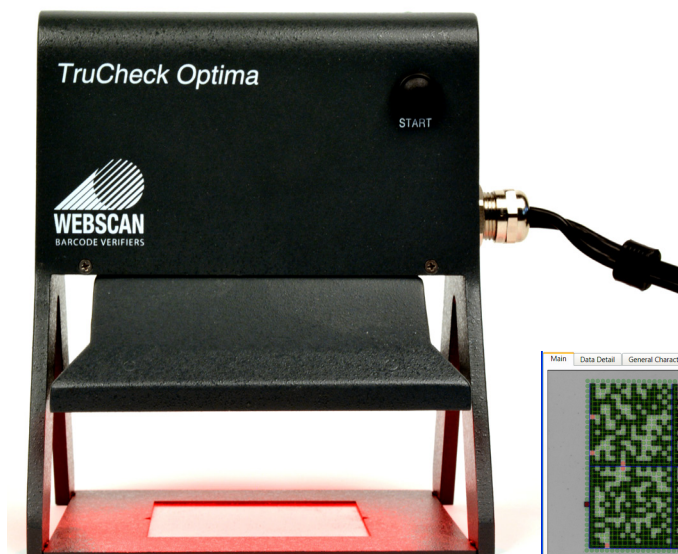
The TruCheck Optima™ verifies linear (1D) and 2D matrix symbols. Be ready to verify Data Matrix, QR Code and Aztec Code symbols now.

Compact, hand held -- and other options

With its integrated illumination, and compact size, it is easy to move the unit to where it is needed. On a label, or even on an object. The design ensures that the image is calibrated and in focus. Webscan's broader product line incorporates these hand-held and other fixed mount versions. Choose whichever version is right for you, without compromising ease-of-use, or accuracy.

Webscan commitment

Since 1995, Webscan has been solely focused on designing and manufacturing the world's most accurate and reliable barcode verification equipment. We have earned the reputation as industry experts from our work on standards committees and customer support. With Webscan you know your codes are being verified properly and your customers will recognize your commitment to bar code quality.



Webscan, Inc.

1341 Sherman Drive | Unit D | Longmont, CO 80501
Tel 303.485.6811 | Fax 303.485.6353
www.webscaninc.com